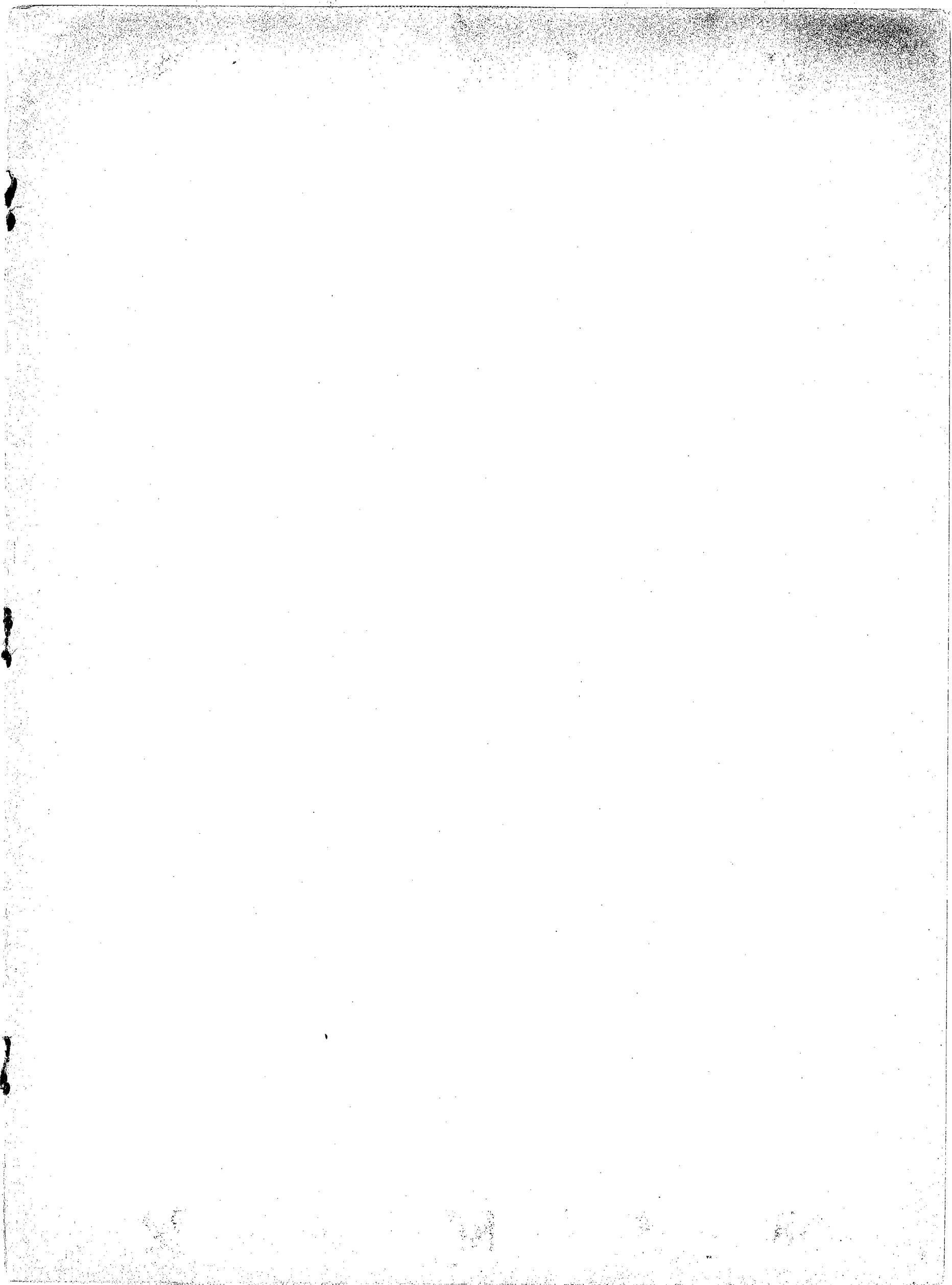


Herzliebster Jesu  
für Organ

by

To: St George Tucker



## PERFORMANCE INSTRUCTIONS

### 1 Dynamics:

The piece is in varying degrees of softness until the last variation which is fortissimo:

Theme, Chorale, Variations I and II:	p
Variation III:	mp
Variation IV:	pp
Variation V:	ff

### 2 Registration:

Up to Variation V the registrations should be extremely sweet and sentimental, although the lines must be clear.

The Chorale should sound like a hymn.  
Variations I-V should have two different colors, one for the upper lines, one for the lower line.  
Variation V may have two manuals, the top stave with more high harmonics, and with more transparency, than the second stave.

### Differing characters of the soft Variations:

Variation I: soft, round, and sweet.  
Variation II: jangly and nasal.  
Variation III: full and forceful, though soft.  
Variation IV: as soft and thin as possible.

Handwritten musical score for piano, consisting of two systems of staves. The notation is in treble clef with a key signature of two flats (B-flat and E-flat). The first system includes a section labeled "Theme" and a section labeled "Chorale".

**System 1:**

- Staff 1: Theme, starting with a half note G4, followed by quarter notes A4, B4, C5, B4, A4, G4.
- Staff 2: Theme, starting with a half note G4, followed by quarter notes A4, B4, C5, B4, A4, G4.
- Staff 3: Chorale, starting with a half note G4, followed by quarter notes A4, B4, C5, B4, A4, G4.
- Staff 4: Chorale, starting with a half note G4, followed by quarter notes A4, B4, C5, B4, A4, G4.
- Staff 5: Chorale, starting with a half note G4, followed by quarter notes A4, B4, C5, B4, A4, G4.
- Staff 6: Chorale, starting with a half note G4, followed by quarter notes A4, B4, C5, B4, A4, G4.

**System 2:**

- Staff 7: Continuation of the Theme, starting with a half note G4, followed by quarter notes A4, B4, C5, B4, A4, G4.
- Staff 8: Continuation of the Theme, starting with a half note G4, followed by quarter notes A4, B4, C5, B4, A4, G4.
- Staff 9: Continuation of the Theme, starting with a half note G4, followed by quarter notes A4, B4, C5, B4, A4, G4.
- Staff 10: Continuation of the Theme, starting with a half note G4, followed by quarter notes A4, B4, C5, B4, A4, G4.
- Staff 11: Continuation of the Theme, starting with a half note G4, followed by quarter notes A4, B4, C5, B4, A4, G4.
- Staff 12: Continuation of the Theme, starting with a half note G4, followed by quarter notes A4, B4, C5, B4, A4, G4.

I Ah, holy Jesus, how hast thou offended

Handwritten musical notation for the first system. It consists of a treble clef staff with a key signature of one flat (B-flat) and a 4/4 time signature. The melody line contains several measures of music. The piano accompaniment is written in a grand staff format, with chords in the right hand and a bass line in the left hand. A triplet of eighth notes is visible in the bass line.

Handwritten musical notation for the second system. It continues the melody and piano accompaniment from the first system. The piano accompaniment features a triplet of eighth notes in the bass line.

Handwritten musical notation for the third system. It continues the melody and piano accompaniment. The piano accompaniment consists of chords in the right hand and a bass line in the left hand.

Handwritten musical notation for the fourth system. It concludes the piece with a final cadence. The piano accompaniment features a triplet of eighth notes in the bass line.

A handwritten musical score on a single page, featuring piano accompaniment and a vocal line. The score is organized into four systems, each with three staves. The piano part is written in the upper two staves of each system, and the vocal line is in the lower staff. The music is in a key with one sharp (F#) and a 4/4 time signature. The piano accompaniment includes various rhythmic patterns, including eighth and sixteenth notes, and rests. The vocal line consists of a single melodic line with lyrics written below it. The score concludes with a double bar line and repeat dots. The handwriting is clear and legible.

II Who was the guilty?

*attaca*

Handwritten musical notation for the first system. It consists of two staves: a treble clef staff on top and a bass clef staff on the bottom. The treble staff contains several measures of music, including quarter notes, eighth notes, and rests. There are several triplet markings (a '3' over a group of notes) and some accidentals (sharps and flats). The bass staff contains similar notation, with some notes beamed together and some rests.

III Lo, the Good Shepherd

Handwritten musical notation for the second system. It consists of two staves. The treble staff begins with a dynamic marking of *mp* (mezzo-piano) and contains several measures of music with triplet markings. The bass staff continues the musical line with various notes and rests.

Handwritten musical notation for the third system. It consists of two staves. The treble staff features a complex rhythmic pattern with many triplet markings. The bass staff also contains complex rhythmic patterns and triplet markings, with some notes beamed together.

Handwritten musical notation for the fourth system. It consists of two staves. The treble staff has several measures of music, including some notes with accidentals. The bass staff continues the piece with various notes and rests, ending with a final chord.

Handwritten musical notation for the first system. The top staff is a vocal line with a treble clef and a key signature of one sharp (F#). The bottom two staves are piano accompaniment, with the left hand in the bass clef and the right hand in the treble clef. The music consists of quarter and eighth notes, with some rests.

Handwritten musical notation for the second system. The vocal line continues with a melodic phrase. The piano accompaniment features chords and moving lines in both hands.

Handwritten musical notation for the third system. The vocal line has a long note with a slur. The piano accompaniment includes some complex chordal textures.

Handwritten musical notation for the fourth system. The vocal line includes the lyrics "For me + hinc : incarnation". The piano accompaniment features triplets and other rhythmic patterns.



